



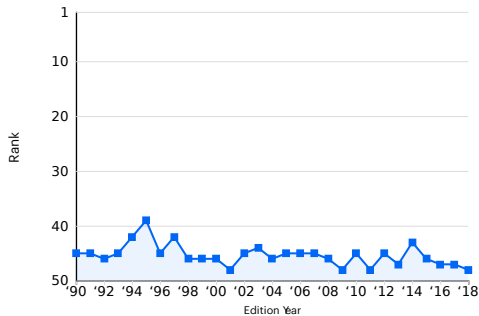
Alabama

OVERALL RANK: 48

CHANGE: ▼ 1

DETERMINANTS RANK: 48

OUTCOMES RANK: 49



Rank Based On: Weighted sum of the number of standard deviations each core measure is from the national average.



Alabama

STRENGTHS

- Low prevalence of excessive drinking
- High percentage of high school graduation
- High per capita public health funding

CHALLENGES

- High prevalence of obesity
- High cardiovascular death rate
- Lower rate of mental health providers

HIGHLIGHTS

- In the past six years, obesity increased 13% from 32.0% to 36.3% of adults
- In the past five years, drug deaths increased 26% from 12.2 to 15.4 deaths per 100,000 population
- In the past 15 years, air pollution decreased 46% from 15.6 to 8.4 micrograms of fine particles per cubic meter
- In the past year, HPV immunization among males aged 13 to 17 increased 36% from 24.7% to 33.7%
- In the past three years, the percentage uninsured decreased 28% from 12.9% to 9.3% of the population
- In the past six years, diabetes increased 19% from 11.8% to 14.1% of adults

WEBSITE: www.alabamapublichealth.gov/

Measure	Rating	2018 Value	2018 Rank
BEHAVIORS			
Drug Deaths (Deaths per 100,000 population)	++++	15.4	20
Excessive Drinking (Percentage of adults)	+++++	13.9%	4
High School Graduation (Percentage of students)	++++	87.1%	16
Obesity (Percentage of adults)	+	36.3%	46
Physical Inactivity (Percentage of adults)	+	32.0%	45
Smoking (Percentage of adults)	+	20.9%	41
Behaviors * (All Behaviors Measures)	++	-0.106	40
COMMUNITY & ENVIRONMENT			
Air Pollution (Micrograms of fine particles per cubic meter)	++	8.4	40
Children in Poverty (Percentage of children aged 0 to 17)	+	24.6%	46
Infectious Disease * (Mean z score of chlamydia, pertussis and Salmonella)	+	0.547	45
Chlamydia (Cases per 100,000 population)	++	553.6	40
Pertussis (Cases per 100,000 population)	++++	3.6	19
Salmonella (Cases per 100,000 population)	+	26.4	44
Occupational Fatalities (Deaths per 100,000 workers)	++	6.3	39
Violent Crime (Offenses per 100,000 population)	+	524	43
Community & Environment * (All Community & Environment Measures)	+	-0.162	49
POLICY			
Immunizations - Adolescents * (Mean z score of HPV, meningococcal and Tdap)	++	-0.547	39
HPV Immunization Females (Percentage of females aged 13 to 17)	++	47.2%	38
HPV Immunization Males (Percentage of males aged 13 to 17)	+	33.7%	42
Meningococcal Immunizations (Percentage of adolescents aged 13 to 17)	++	78.3%	38
Tdap Immunizations (Percentage of adolescents aged 13 to 17)	+++	88.7%	30
Immunizations - Children (Percentage of children aged 19 to 35 months)	+++	71.2%	21
Public Health Funding (Dollars per person)	++++	\$112	12
Uninsured (Percentage of population)	++	9.3%	36
Policy * (All Policy measures)	++	-0.005	34
CLINICAL CARE			
Dentists (Number per 100,000 population)	+	40.4	50
Low Birthweight (Percentage of live births)	+	10.3%	48
Mental Health Providers (Number per 100,000 population)	+	92.6	50
Preventable Hospitalizations (Discharges per 1,000 Medicare enrollees)	+	62.0	46
Primary Care Physicians (Number per 100,000 population)	+	122.8	41
Clinical Care * (All Clinical Care measures)	+	-0.210	49
ALL DETERMINANTS			
All Determinants * (All Determinants)	+	-0.483	48
OUTCOMES			
Cancer Deaths (Deaths per 100,000 population)	+	210.5	42
Cardiovascular Deaths (Deaths per 100,000 population)	+	342.6	49
Diabetes (Percentage of adults)	+	14.1%	48
Disparity in Health Status (Percentage point difference)	+++++	23.1%	9
Frequent Mental Distress (Percentage of adults)	+	15.3%	44
Frequent Physical Distress (Percentage of adults)	+	16.6%	47
Infant Mortality (Deaths per 1,000 live births)	+	8.7	49
Premature Death (Years lost before age 75 per 100,000 population)	+	10,720	48
All Outcomes * (All Outcomes Measures)	+	-0.356	49
OVERALL			
Overall * (Overall)	+	-0.838	48

RATING	RANK
+++++	1 - 10
++++	11 - 20
+++	21 - 30
++	31 - 40
+	41 - 50

* Value indicates z score. Negative scores are below US value; positive scores are above US value. For complete definitions of measures including data sources and years, see "[Appendix: Core Measures Table](#)".

- Data Unavailable

SUPPLEMENTAL MEASURES

Measure	Rating	2018 Value	2018 Rank
Adverse Childhood Experiences (Percent of children aged 0 to 17 with 2+ ACEs)	+	27.7%	46
Binge Drinking (Percentage of adults)	+++++	12.4%	3
Cholesterol Check (Percentage of adults)	++++	87.5%	14
Chronic Drinking (Percentage of adults)	+++++	4.6%	4

Dedicated Health Care Provider (Percentage of adults)	+++	79.2%	22
Dental Visit, Annual (Percentage of adults)	++	62.3%	36
Disconnected Youth (Percentage of teens and young adults aged 16 to 24)	++	14.1%	39
Fruits (Mean number of fruits per day)	+	1.2	48
Heart Attack (Percentage of adults)	+	5.9%	46
Heart Disease (Percentage of adults)	+	5.5%	46
High Blood Pressure (Percentage of adults)	+	41.9%	49
High Cholesterol (Percentage of adults)	+	37.2%	45
High Health Status (Percentage of adults)	+	43.6%	45
Income Inequality - Gini Index (Gini Ratio)	++	0.477	33
Injury Deaths (Deaths per 100,000 population)	++	80.2	34
Insufficient Sleep (Percentage of adults)	+	37.7%	43
Median Household Income (Dollars per household)	+	\$51,113	44
Neighborhood Amenities (Percentage of children aged 0 to 17)	+	17.3%	48
Poor Mental Health Days (Mean number of days)	+	4.8	45
Poor Physical Health Days (Mean number of days)	+	5.1	46
Seat Belt Use (Percentage of adults)	+++	86.4%	27
Severe Housing Problems (Percentage of occupied housing units)	++++	14.9%	16
Six+ Teeth Extractions (Percentage of adults aged 45 to 64)	+	27.7%	46
Stroke (Percentage of adults)	+	4.9%	49
Suicide (Deaths per 100,000 population)	+++	16.2	27
Underemployment Rate (Percentage of civilian workforce)	+++	8.2%	26
Unemployment Rate, Annual (Percentage of civilian workforce)	+++	4.3%	25
Vegetables (Mean number of vegetables per day)	+	1.8	45
Voter Registration (Percentage of citizens registered to vote)	++	69.2%	37
Water Fluoridation (Percentage of population served)	+++	78.6%	23

RATING RANK

+++++	1 - 10
++++	11 - 20
+++	21 - 30
++	31 - 40
+	41 - 50

- Data Unavailable

Children in Poverty



24.6% ▲
 SINCE 2017, CHILDREN IN POVERTY*
INCREASED FROM 24.5% TO 24.6%
 * Percentage of children aged 0 to 17

Mental Health Providers



92.6 ▲
 SINCE 2017, MENTAL HEALTH
 PROVIDERS* **INCREASED 9% FROM**
85.0 TO 92.6
 * Number per 100,000 population

Primary Care Physicians



122.8 ▲
 SINCE 2017, PRIMARY CARE
 PHYSICIANS* **INCREASED 3% FROM**
119.3 TO 122.8
 * Number per 100,000 population

Frequent Mental Distress



15.3% ▲
 SINCE 2017, FREQUENT MENTAL
 DISTRESS* **INCREASED 6% FROM**
14.4% TO 15.3%
 * Percentage of adults

Suicide



16.2 ▲
 SINCE 2017, SUICIDE* **INCREASED 5%**
FROM 15.4 TO 16.2
 * Deaths per 100,000 population

Obesity



36.3% ▲
 SINCE 2017, OBESITY* **INCREASED**
2% FROM 35.7% TO 36.3%
 * Percentage of adults



Top 5 States

1: HAWAII

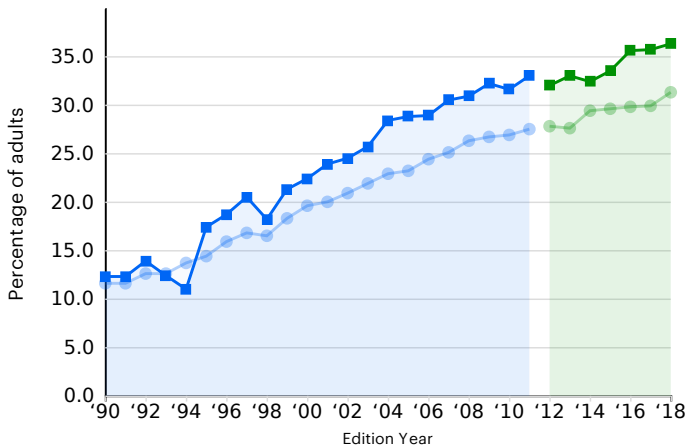
2: MASSACHUSETTS

3: CONNECTICUT

4: VERMONT

5: UTAH

Obesity



■ Percentage of adults with a body mass index of 30.0 or higher based on reported height and weight (pre-2011 BRFSS methodology)

■ Percentage of adults with a body mass index of 30.0 or higher based on reported height and weight

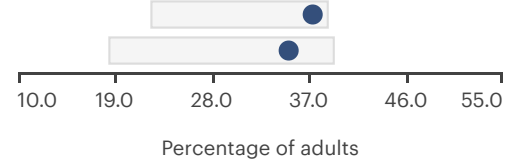
■ Alabama **●** United States

Obesity now affects nearly one in three adults in the United States. It is a leading cause of preventable life-years lost and contributes to chronic illness such as heart disease, type 2 diabetes, stroke, cancer and hypertension. Contributing factors include poor diet, physical inactivity, social and physical environment, genetics and medical history. Populations that experience a higher prevalence of obesity include non-Hispanic black and Hispanic adults compared with white and Asian adults, and adults living in nonmetropolitan counties compared with adults living in metropolitan counties. Compared with healthy weight adults, individuals with obesity spend on average \$3,429 more per person annually on medical care.

■ Range of Values for all States **●** AL Value

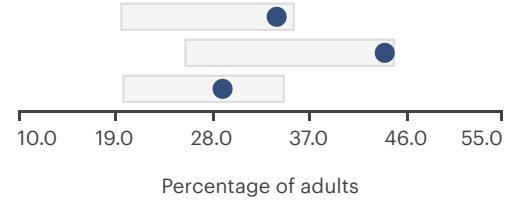
GENDER

Female
Male



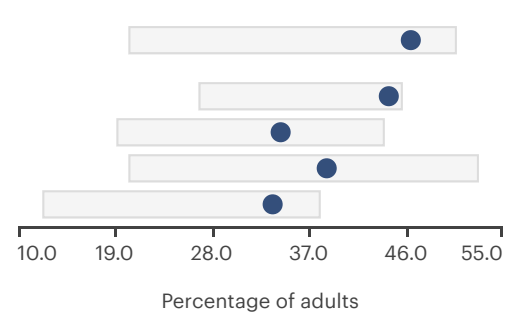
AGE

Aged 18-44
Aged 45-64
Aged 65+



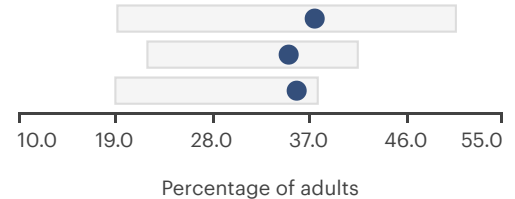
RACE/ETHNICITY

American Indian/Alaskan Native
Black
Hispanic
Multiracial
White



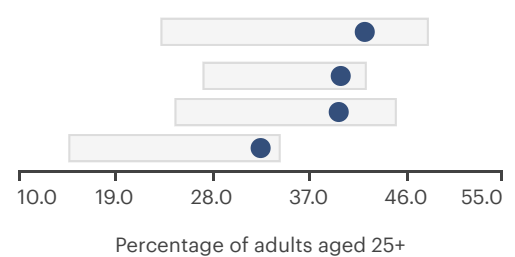
URBANICITY

Rural
Suburban
Urban



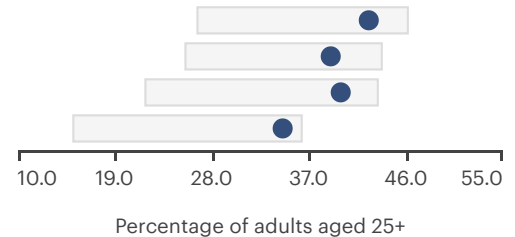
EDUCATION

Less than High School
High School Grad
Some College
College Grad

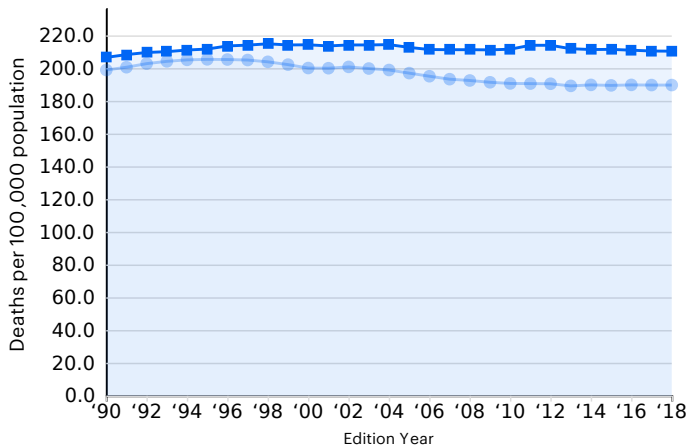


INCOME

Less Than \$25,000
\$25-\$49,999
\$50-\$74,999
\$75,000 or More



Cancer Deaths



Age-adjusted number of deaths due to all causes of cancer per 100,000 population (3-year average)

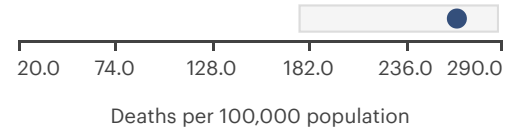
Alabama United States

Overall cancer mortality continues to decline, however, cancer remains the second-leading cause of death. It is estimated that in 2018 there will be more than 1.7 million new cases of cancer and 609,000 people will die as a result. Lung cancer accounts for the majority of cancer deaths among men (26 percent) and women (25 percent). Smoking is responsible for 32 percent of cancer deaths – avoiding tobacco use is the best way to reduce cancer deaths. Deaths from breast cancer, colorectal cancer and cervical cancer may be avoided through screening programs that detect cancer in early stages while it is most susceptible to treatment. Health care costs associated with cancer totaled \$80.2 billion in 2015.

Range of Values for all States AL Value

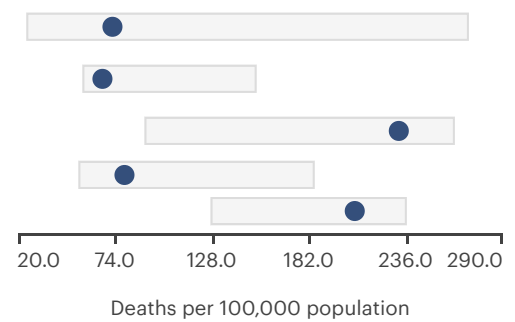
GENDER

Female
Male



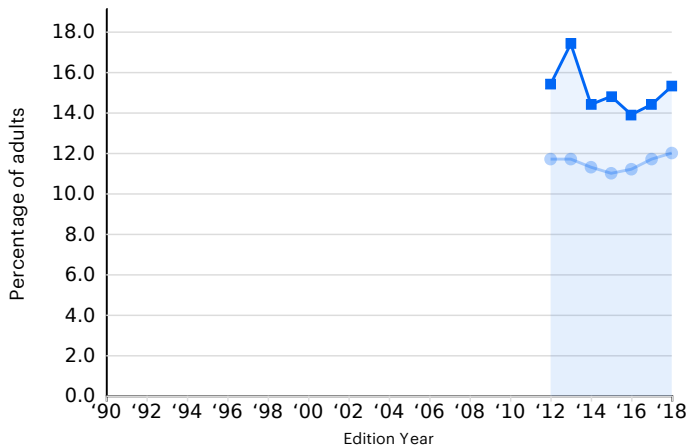
RACE/ETHNICITY

American Indian/Alaska Native
Asian/Pacific Islander
Black/African American
Hispanic/Latino
White



Data suppression rules are as defined by the original source.
Race and ethnicity populations are as defined by the original source.

Frequent Mental Distress



■ Percentage of adults who reported their mental health was not good 14 or more days in the past 30 days

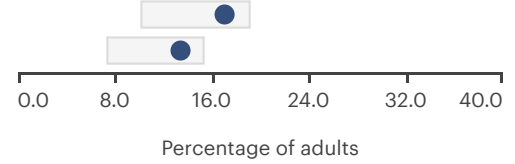
■ Alabama **●** United States

Frequent mental distress is a measure of perceived poor mental health and represents the percentage of the population experiencing persistent and likely severe mental health issues. A healthy mental state is essential to overall positive health and well-being. In some cases, poor mental health can lead to suicide, the 10th-leading cause of death in the United States. Although occasional short periods of mental distress may be unavoidable, more prolonged and serious episodes are treatable and preventable through early intervention. Direct medical spending associated with mental disorders (including anxiety, depression and dementia) in the U.S. reached \$201 billion in 2013.

■ Range of Values for all States **●** AL Value

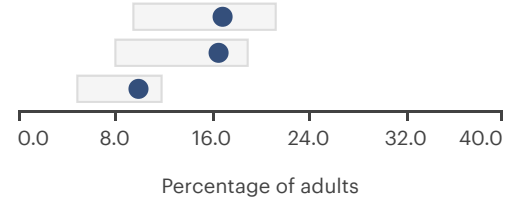
GENDER

Female
Male



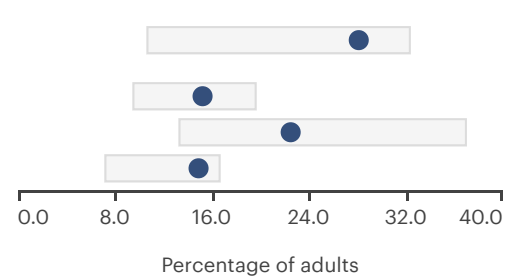
AGE

Aged 18-44
Aged 45-64
Aged 65+



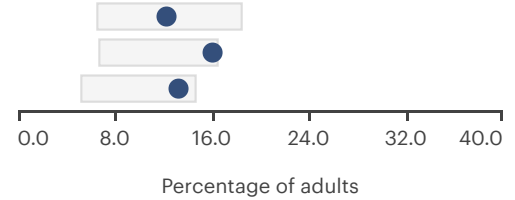
RACE/ETHNICITY

American Indian/Alaskan Native
Black
Multiracial
White



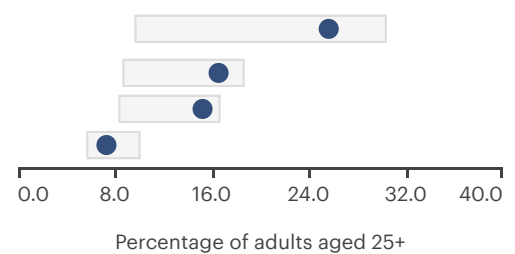
URBANICITY

Rural
Suburban
Urban



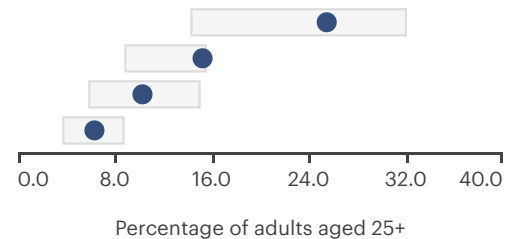
EDUCATION

Less than High School
High School Grad
Some College
College Grad



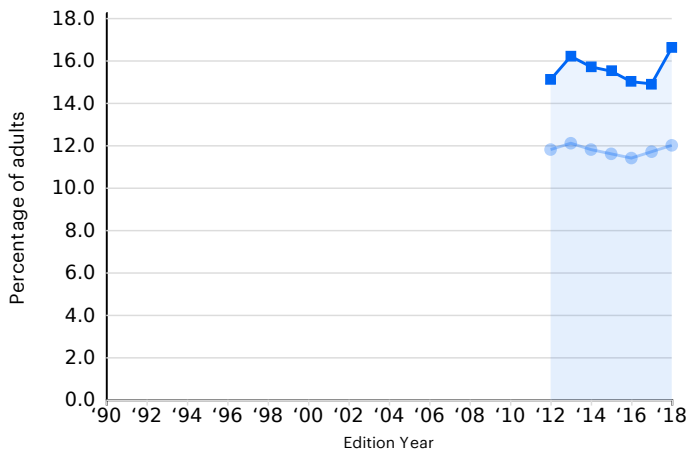
INCOME

Less than \$25,000
\$25-\$49,999
\$50-\$74,999
\$75,000 or More



Data suppression rules are as defined by the original source.

Frequent Physical Distress



■ Percentage of adults who reported their physical health was not good 14 or more days in the past 30 days

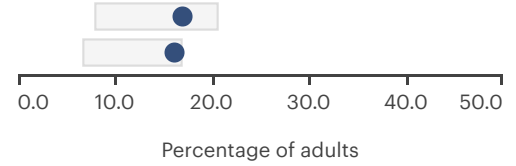
■ Alabama **●** United States

Frequent physical distress is a measure of perceived poor physical health and represents the percentage of the population experiencing persistent and likely severe physical health problems. Those who report frequent poor physical health days are at higher risk of mortality, increased health care use and lower health-related quality of life. Frequent physical distress is more common in women than in men, and among adults with a greater number of chronic illnesses, such as heart attack, angina and stroke.

■ Range of Values for all States **●** AL Value

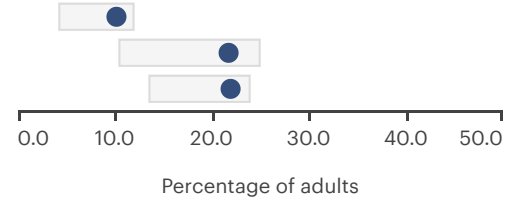
GENDER

Female
Male



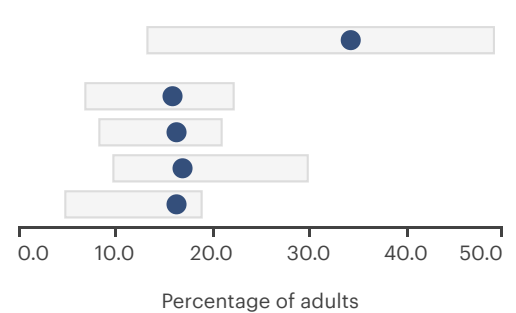
AGE

Aged 18-44
Aged 45-64
Aged 65+



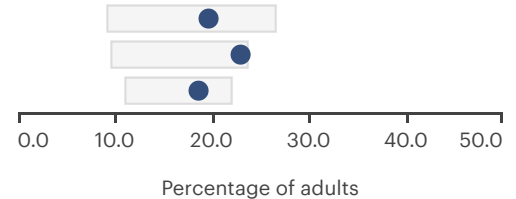
RACE/ETHNICITY

American Indian/Alaskan Native
Black
Hispanic
Multiracial
White



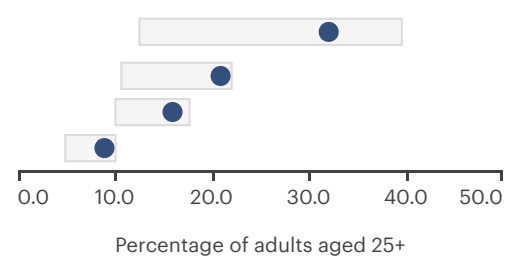
URBANICITY

Rural
Suburban
Urban



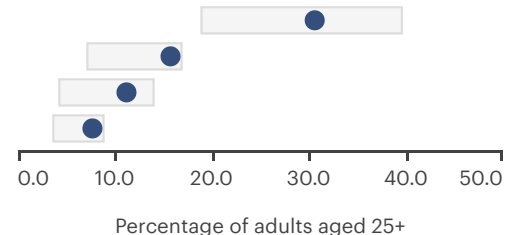
EDUCATION

Less than High School
High School Grad
Some College
College Grad

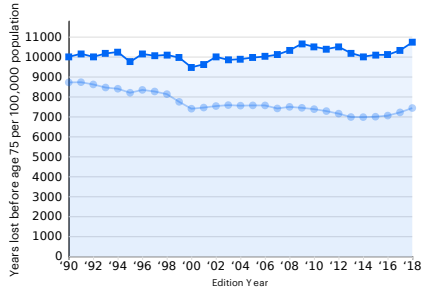


INCOME

Less than \$25,000
\$25-\$49,999
\$50-\$74,999
\$75,000 or More



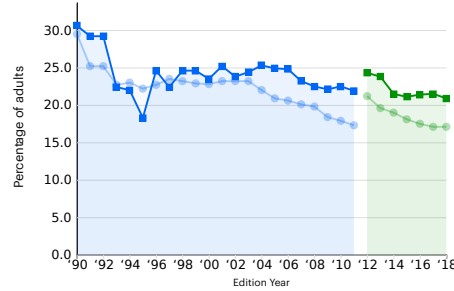
Trend: Premature Death, Alabama, United States



Number of years of potential life lost before age 75 per 100,000 population

■ Alabama ● United States

Trend: Smoking, Alabama, United States Trend: Air Pollution, Alabama, United States

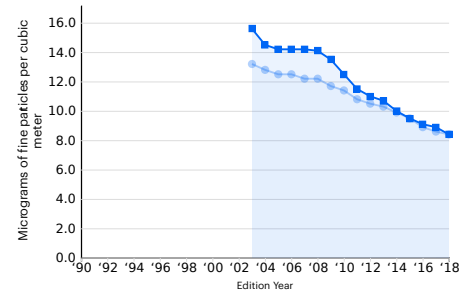


Percentage of adults who are smokers (reported smoking at least 100 cigarettes in their lifetime and currently smoke every or some days) (pre-2011 BRFSS methodology)

■ Alabama ● United States

Percentage of adults who are smokers (reported smoking at least 100 cigarettes in their lifetime and currently smoke every or some days)

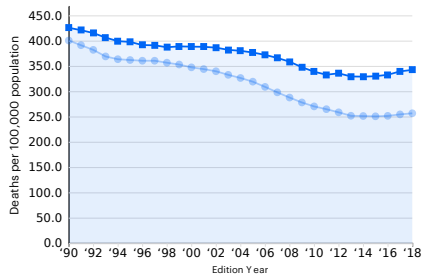
■ Alabama ● United States



Average exposure of the general public to particulate matter of 2.5 microns (PM2.5) or less in size (3-year average)

■ Alabama ● United States

Trend: Cardiovascular Deaths, Alabama, United States



Age-adjusted number of deaths due to all cardiovascular diseases including heart disease and stroke per 100,000 population (3-year average)

■ Alabama ● United States